
Equit-E-Cycle Services:

Free Recyclable Items:

Computers, keyboards, cell phones, telephone systems, fax machines, copiers, scanners, printers, VCR's, DVD's, stereos, radios, surge protectors, cords and cables. (Any items not listed must be approved before being dropped off.)

Items with a disposal fee:

Monitors — \$10.00 each

Televisions—\$20.00 each

Additional Services:

- Hard drive destruction with Department of Defense level certificate — \$8.00 each
- Pick up service available (additional charge will apply)

***WE DO NOT ACCEPT MICROWAVES
OR HOUSEHOLD APPLIANCES***

Our Pledge to Equit-E-Cycle Customers

Equit-E-Cycle is a responsible recycler.

Our shredders process end-of-life electronics through their state-of-art machinery and the resulting outputs are recycled in accordance with all applicable US environmental laws and regulations. Throughout the utilization of our process, no electronics are sent to landfills or shipped overseas to third-world countries. We uphold the highest standards available in the industry.

Directions:

I-10 to Michigan Avenue Exit 23, turn South

Continue straight until Wright Transportation

Turn right onto Perimeter Road

Follow Perimeter Road around a sharp corner, over rail road tracks

Equity Technologies is the 2nd business on the left past the railroad tracks.

Please follow the **GREEN Recycle signs** through the gated area of Equity Technologies to the 4th dock door.

Equit-E-Cycle will be there to unload your recyables.

Monday—Friday

7am—2pm

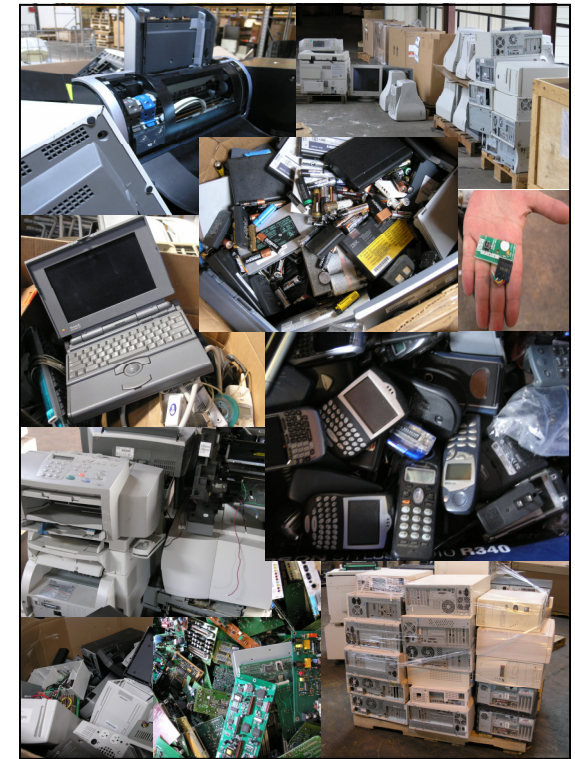
Equit-E-Cycle

Division of Equity Technologies Corp.



2301 Perimeter Road
Mobile, AL 36615
251-415-3823
251-415-3819 Fax

recycle@equitytechcorp.com



*Electronics Never Leave the Landfill.
Please Recycle!*

*Over 550,000 pounds in one year
kept out of local & national landfills*

The Global Problem

Today, the high demand for the latest electronic equipment, such as computers and cell phones, has accelerated the nation's electronic waste, or "e-waste". The nation now dumps between 300 million and 400 million electronic items per year and less than 20% of that e-waste is recycled. Improperly discarded electronic equipment makes up more than half of the toxic heavy metals, such as lead and mercury, found in our landfills today. These hazardous materials can leach into the surrounding air, water and soil supplies and contaminate them.



The proper recycling of end-of-life electronic equipment saves millions of tons of mine waste and conserves our finite natural resources, including limited landfill space.

- One ton of copper creates 320 tons of mine waste consisting of: arsenic, mercury, lead, cadmium.
- Gold mining produces more mercury pollution than any other activity on the planet (EPA). One gold ring produces 20 tons of mine waste.

Why Should You Recycle Your Electronics?

- To conserve natural resources
- To support the community
- To create local jobs. Recycling creates 6 times as many jobs as land filling
- To protect public health and the environment
- Flat panel monitors and notebooks often contain small amounts of mercury
- Older TV's and computers typically contain 4 to 7 pounds of lead
- Fewer than 20% of cell phones are recycled each year, but if we recycle just a million cell phones, it would reduce greenhouse gas emissions equal to taking 1,368 cars off the road for a year
- E-waste represents 2% of America's trash in landfills, but equals 70% of overall toxic waste
- An estimated 130,000 computers are discarded in the U.S.A. everyday
- E-waste is the nation's fastest-growing category of solid waste
- 80% of what Americans throw away is recyclable, yet our recycling rate is just 28%
- The e-waste stream is growing three times the normal rate when compared to the other municipal waste streams, according to the EPA

Imagine how e-waste has grown in just a few years.

- In 2006, the average American household contained 25 consumer electronic products.
- Between 1997 and 2007, almost two computers per person in the USA have become obsolete(500 million personal computers).
- HD television has created a large number of televisions to be recycled.
- Electronic items that are considered to be hazardous include, but are not limited to:
 - TV & computer monitors
 - LCD desktop & laptop monitors
 - Plasma televisions
 - LCD televisions & portable DVD Players



*Do your part to
Conserve, Create and Protect!
RECYCLE*